



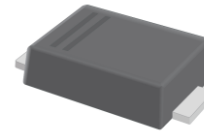
SSCFF1D1 THRU SSCFF7D1

1.0Amp Fast Recovery Surface Mounted Rectifiers

● Features

- ✧ The plastic package carries Underwriters Laboratory Flammability Classification 94V-0
- ✧ Construction utilizes void-free molded plastic technique
- ✧ Low reverse leakage
- ✧ High forward surge current capability
- ✧ High temperature soldering guaranteed 260°C/10 seconds at terminals

● PIN configuration



SMF/SOD-123FL



Circuit Diagram

● Mechanical Data

- ✧ Case: Molded plastic body
- ✧ Terminals: Solder plated, solderable per MIL-STD-750, Method 2026
- ✧ Polarity: Polarity symbol marking on body
- ✧ Mounting Position: Any



Marking

(F7: SSCFF7D1 Marking Code)

● Absolute Maximum Rating (T_A=25°C unless otherwise noted)

Parameter	Symbol	SSCF							Unit
		F1D1	F2D1	F3D1	F4D1	F5D1	F6D1	F7D1	
Maximum Peak Repetitive Peak Reverse Voltage	V _{RRM}	50	100	200	400	600	800	1000	V
Maximum RMS Voltage	V _{RMS}	35	70	140	280	420	560	700	V
Maximum DC Blocking Voltage	V _{DC}	50	100	200	400	600	800	1000	V
Maximum Average Forward Rectified Current	I _{F(AV)}	1.0							A
Non-repetitive Peak Forward Surge Current @t=8.3ms	I _{FSM}	30.0							A
Max Instantaneous Forward Voltage at 1.0A	V _F	1.3							V
Maximum DC Reverse Current Ta = 25 °C at Rated DC Blocking Voltage Ta =125 °C	I _R	2.0 200							μA
Maximum Reverse Recovery Time (Note 1)	T _{rr}	150				250	500		ns
Typical Junction Capacitance (Note 2)	C _J	9.0							pF
Typical Thermal Resistance	R _{qJA}	85.0							°C/W
Operating Temperature and Storage Temperature	T _J , T _{STG}	-55 ~ +150							°C

Note: 1. Reverse recovery time test condition: IF=0.5A IR=1.0A Irr=0.25A

2. Measured at 1MHz and applied reverse voltage of 4.0V DC.



● Typical Performance Characteristics ($T_A=25^\circ\text{C}$ unless otherwise noted)

FIG. 1- DERATING CURVE OUTPUT RECTIFIED CURRENT

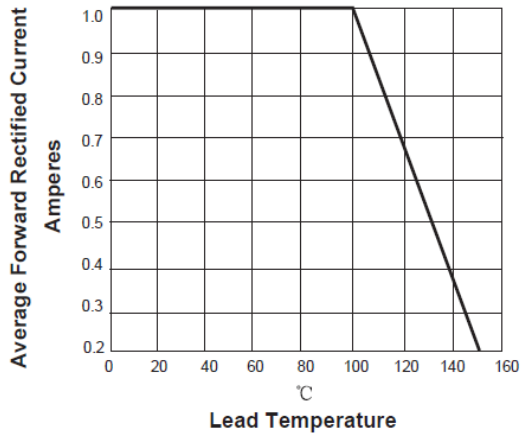


FIG. 2-MAXIMUM NON-REPETITIVE PEAK FORWARD SURGE CURRENT PER LEG

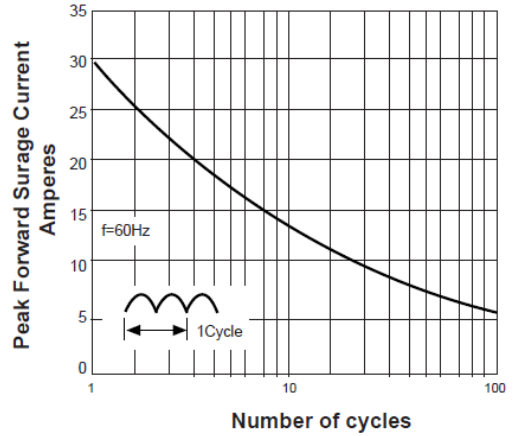


FIG. 3-TYPICAL FORWARD VOLTAGE CHARACTERISTICS

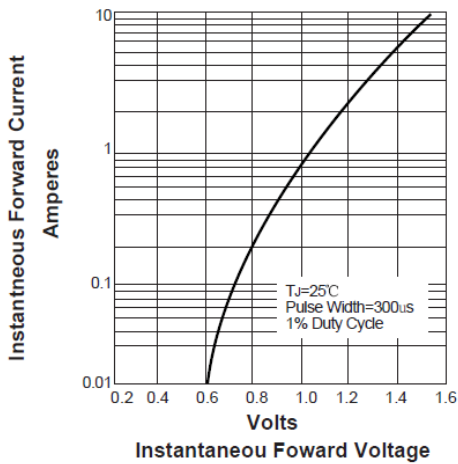
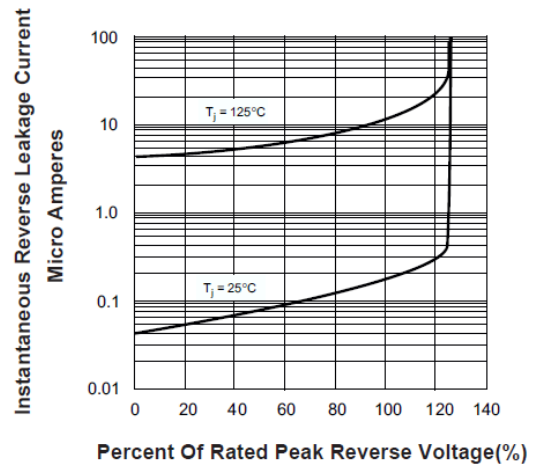


FIG. 4-TYPICAL REVERSE LEAKAGE CHARACTERISTICS





● Package Information

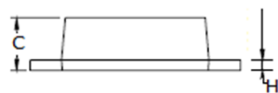
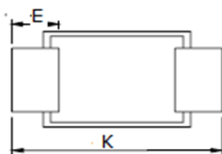
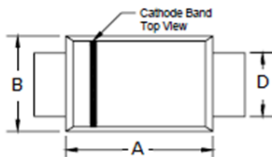
Ordering Information

Device	Package	Marking	Qty per Reel	Reel Size
SSCFF1D1	SMF/SOD-123FL	F1	3000	7 Inch
SSCFF2D1	SMF/SOD-123FL	F2	3000	7 Inch
SSCFF3D1	SMF/SOD-123FL	F3	3000	7 Inch
SSCFF4D1	SMF/SOD-123FL	F4	3000	7 Inch
SSCFF5D1	SMF/SOD-123FL	F5	3000	7 Inch
SSCFF6D1	SMF/SOD-123FL	F6	3000	7 Inch
SSCFF7D1	SMF/SOD-123FL	F7	3000	7 Inch

Mechanical Data

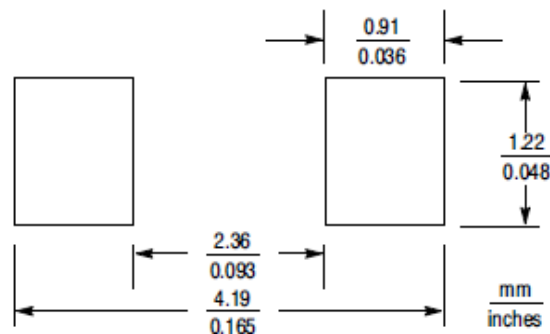
Case: SMF/SOD-123FL

Case Material: Molded Plastic. UL Flammability



Dim	Millimeters	
	Min	Max
A	2.50	2.90
B	1.50	1.90
C	0.095	1.20
D	0.70	1.20
E	0.35	0.85
H	0	0.1
K	3.40	3.90

Recommended Pad outline





DISCLAIMER

AFSEMI RESERVES THE RIGHT TO MAKE CHANGES WITHOUT FURTHER NOTICE TO ANY PRODUCTS HEREIN TO IMPROVE RELIABILITY, FUNCTION OR DESIGN. AFSEMI DOES NOT ASSUME ANY LIABILITY ARISING OUT OF THE APPLICATION OR USE OF ANY PRODUCT OR CIRCUIT DESCRIBED HEREIN; NEITHER DOES IT CONVEY ANY LICIENCE UNDER ITS PATENT RIGHTS, NOR THE RIGHTS OF OTHERS.

THE GRAPHS PROVIDED IN THIS DOCUMENT ARE STATISTICAL SUMMARIES BASED ON A LIMITED NUMBER OF SAMPLES AND ARE PROVIDED FOR INFORMATIONAL PURPOSE ONLY. THE PERFORMANCE CHARACTERISTICS LISTED IN THEM ARE NOT TESTED OR GUARANTEED. IN SOME GRAPHS, THE DATA PRESENTED MAY BE OUTSIDE THE SPECIFIED OPERATING RANGE (E.G. OUTSIDE SPECIFIED POWER SUPPLY RANGE) AND THEREFORE OUTSIDE THE WARRANTED RANGE.